



The Lillifee Franchise – Pure Pink Magic

"Princess Lillifee" has become a merchandising powerhouse over the past years, with countless products on the market licensed by the respected publisher Coppentrath. Rights to books and products have been sold to nearly 30 territories including the Benelux, France, Spain, Japan, Korea, Israel and Scandinavia.

Coppentrath reports sales of over 750,000 articles and 1,300,000 books, with another 60 licensees worldwide producing toys, apparel, toiletries, textiles and other accessories for the little ones.

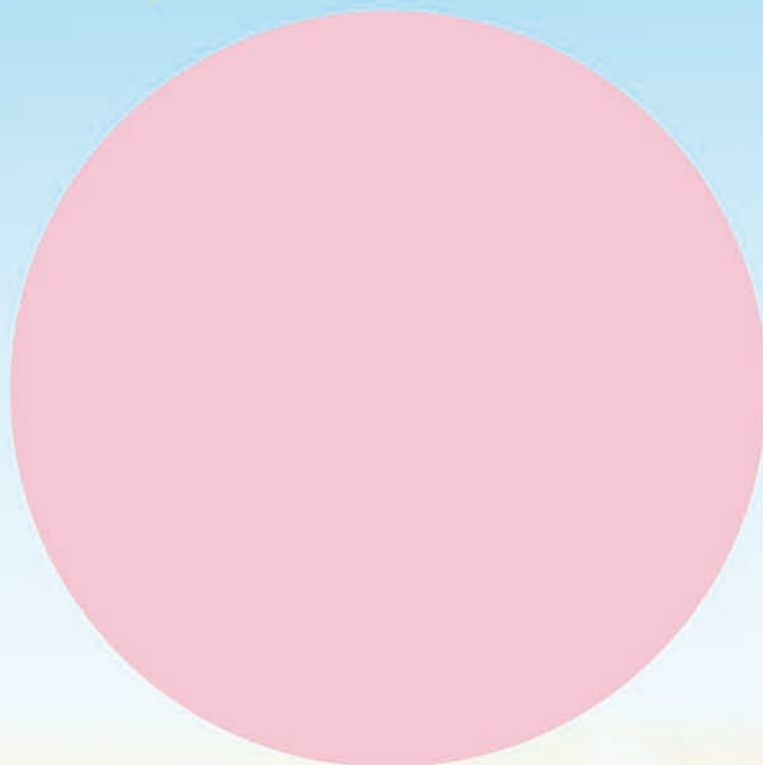


Princess Lillifee

Fueling the interest in Lillifee are the many blogs and fan sites devoted to the little princess – the perfect complement to a successful animation figure!



The magical fairy princess that all girls dream of being ...



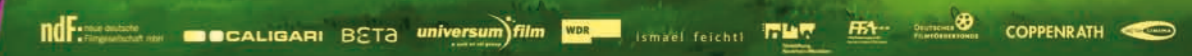
Category	Animation Feature Film and Animation Series
Genre	Family Entertainment
Original title	Princess Lillifee
Directed by	Ansgar Niebuhr Zhijian Xu Alan Simpson
Written by	Mark Slater Gabriele M. Walther
Production credits	Produced by ndF: neue deutsche Filmgesellschaft and Caligari Film in co-production with Universum Film, Beta Film, WDR and Ismael Feichtl
Feature Film Supported by	Filmstiftung NRW, FFA, DFFF
Format	70 minutes and half hour series

www.betacinema.com/lillifee
www.betafilm.com/lillifee
www.betafilm.com/lillifeeseries

BETA www.betafilm.com



ALLE DEUTSCH-LEBENSRECHT MITTEL- UND CALIGARI FILM GMBH IN CO-PRODUKTION MIT UNIVERSUM FILM GMBH, BETA FILM GMBH, WDR UND ISMAEL FEICHTL. PRINCESS LILLIFEE
 ANIMIERUNG VON FFA, DFFF UND TRANSLUCENT WORLD. MUSIK VON GABRIELE M. WALTHER, FRANK POSCANTO. ANIMIERUNG: TANJA REICHERT, FABRIZIO, ERIC WELBERS, SIEGMUND BREYENING, ISMAEL FEICHTL. KOSTÜME: GABRIELE M. WALTHER
 REGIE: ANSGAR NIEBUHR, ZHIJIAN XU, ALAN SIMPSON. SCHAUSPIELER: ANSGAR NIEBUHR, GABRIELE M. WALTHER, WOLFGANG SIMM. MUSIK: GERD DAUMANN. ANIMIERUNG: THOMAS HÖDENSEN, HUBERT WELAND
 PRODUZENT: GISELA SCHÄFER. CO-PRODUZENTEN: SASCHA WOLFF-TÄGER, RACHAEL KHOTIKY. BASED ON THE SERIES BY ANNIKA FINKSTEBUSCH. VERLEIH: COPPENRATH VERLAG.





The magical fairy princess that all girls dream of being ...

The Story

In the enchanted kingdom of Pinkovia the fairy Princess Lillifée rules with a magic hand, creating beauty and spreading goodwill wherever she goes. Together with her best friend, Pupsi the pig, she flies throughout her realm, leaving behind a magical trail: clouds of pink butterflies and sparkling stars!

She soon discovers that not all Pinkovians are happy. They complain about the recklessness and destructive rivalry between the fairies Snowflake, Flicker and Mistral, and, yes, even about low-flying Pupsi's knack for crashing into market stalls or chicken coops. If things don't change, the Farmer Pixies, the Fisher Elves and the Mermaids will leave the enchanted kingdom!

Naturally, this makes Lillifée very sad. But with the help of her friends Pupsi, Basil the hedgehog and Carlos the frog, Lillifée finds a way to restore peace among the fairies and harmony in her magical realm!



Princess Lillifée



This is only the beginning of Princess Lillifée's adventures, for she will continue her efforts to make all her subjects happy in an exciting TV series that's guaranteed to sparkle with glittery splendor!

The Production

From the makers of the hit animation film for tots "Moonbeam Bear" comes a dazzling 2-D treat for millions of little girls around the world! Inspired by Monika Finsterbusch's children's book series and based on an original screenplay by Gabriele M. Walther and Mark Slater, "Princess Lillifée" emphasizes friendship, tolerance and self-confidence.

"She is a resolute little girl who wants to do good. And when she does make a mistake, she summons up an enormous amount of power and imagination to correct it. Even princesses aren't perfect," says Walther.



The animation took altogether 17 months, and involved about 60 animators in Asia, who produced 100,000 individual cells. During the 10 months of pre-production up to 40 specialists in Germany worked on the film. A particular challenge was the depiction of the many glitter effects and different shades of pink - both of which are indispensable in a film about Princess Lillifée!

